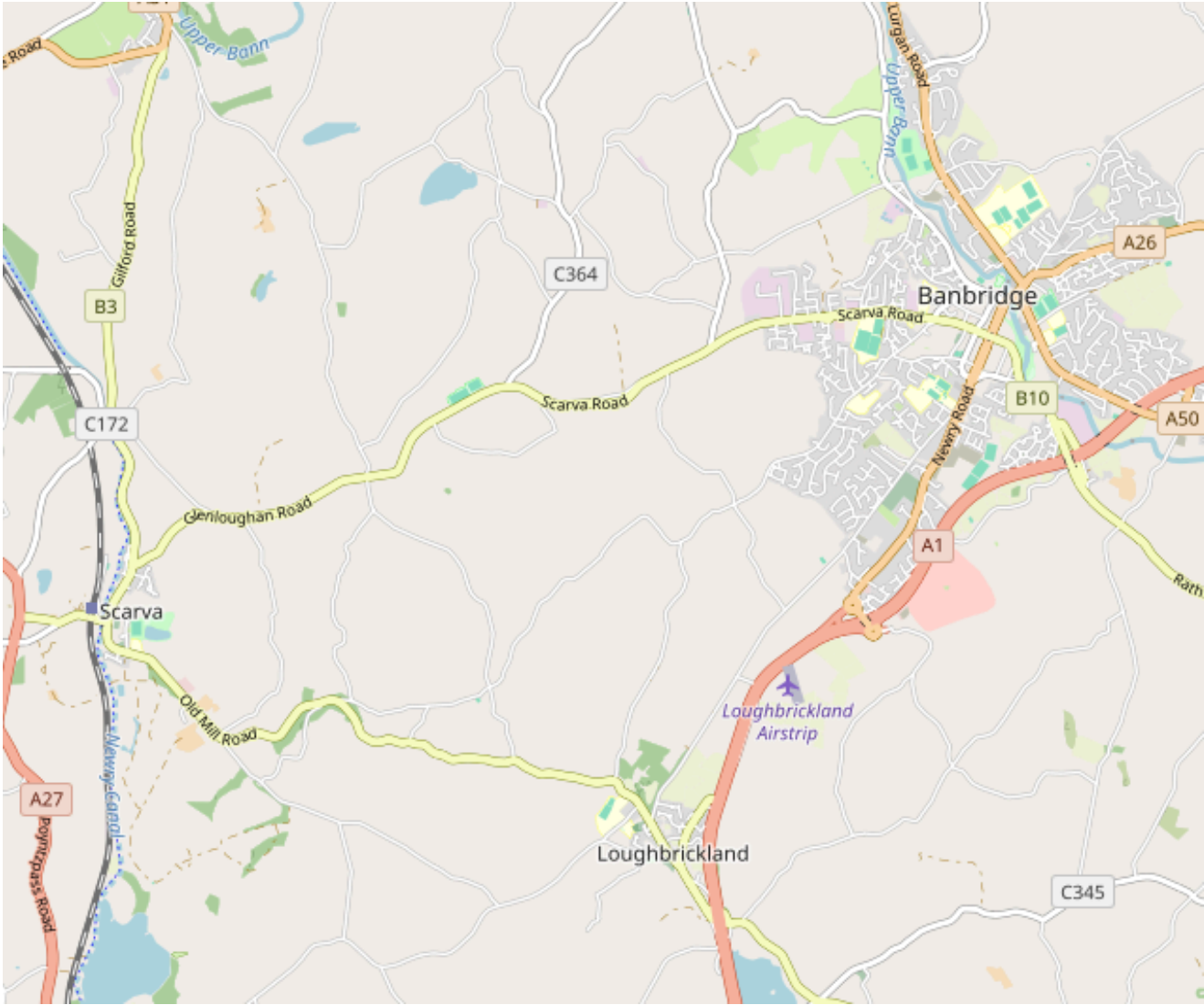
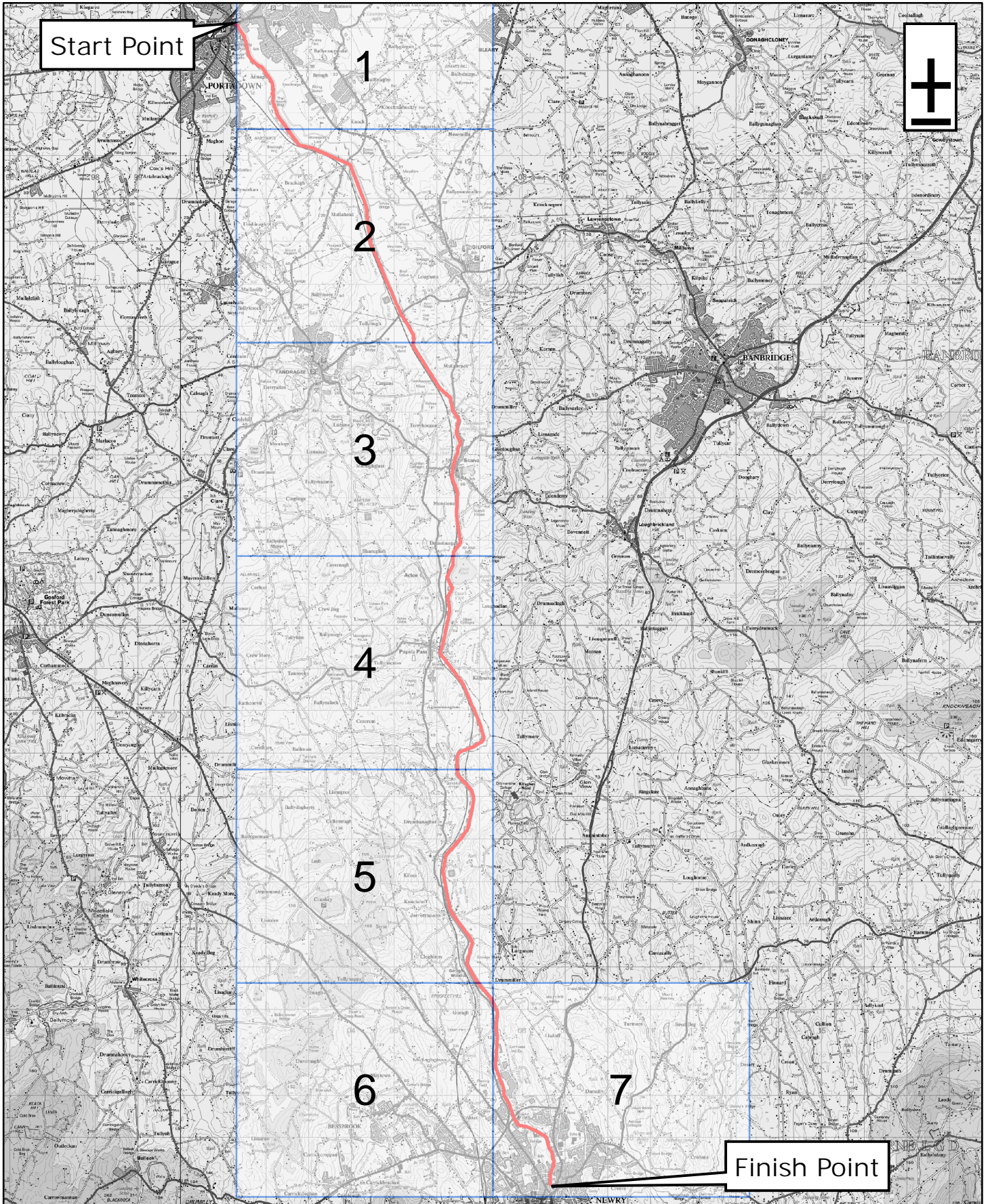


Total Distance: 11km (Newry to Banbridge)

To Banbridge: Follow the Scarva Road, then turn off on the country lane and onto the forest paths. Bus connections to Dublin, Dundalk, Drogheda, Newry and Belfast in Banbridge.



# Newry Canal Way - Overview Map



1:120,000



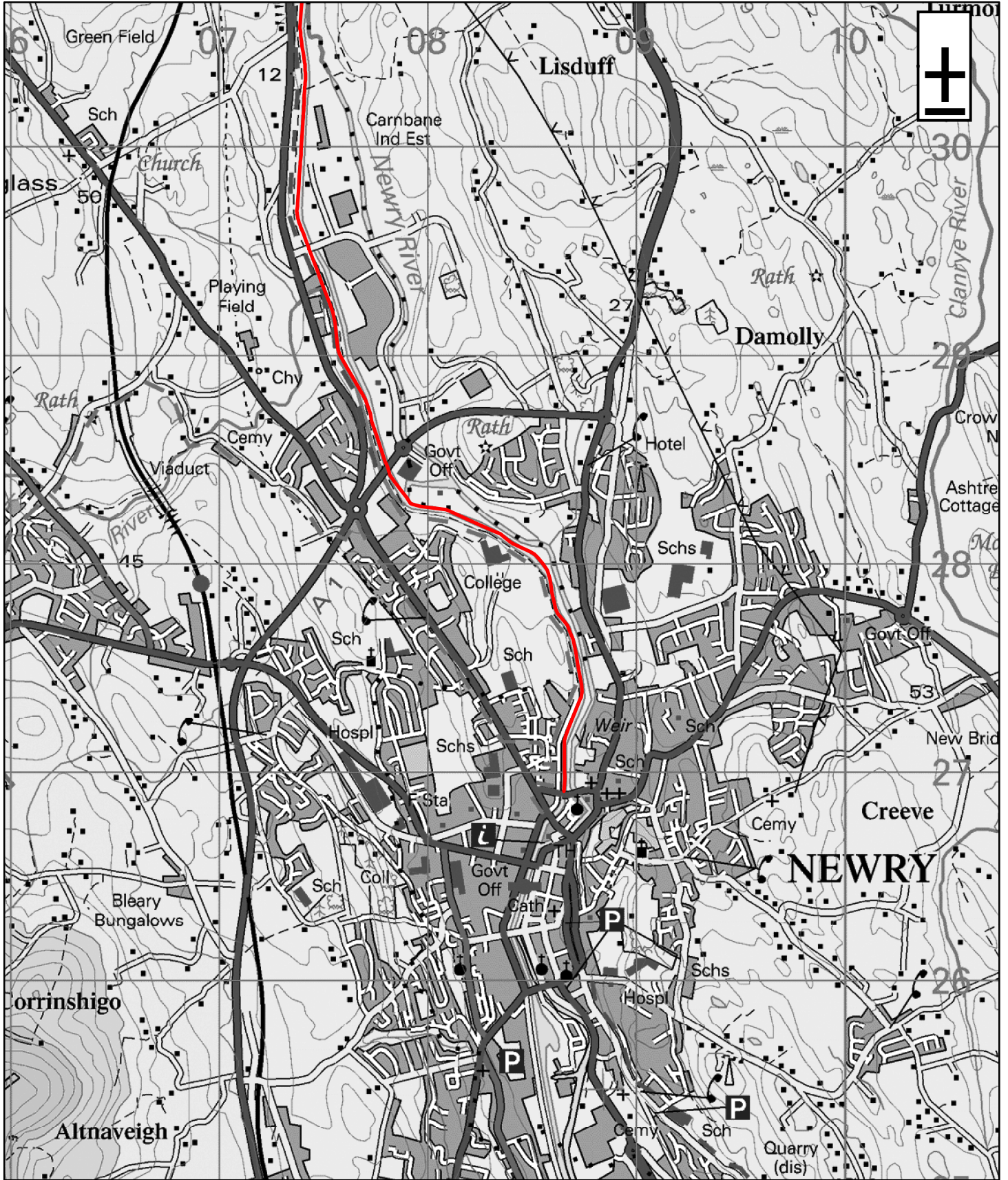
# WalkNI.com

Your definitive guide to walking



This material is Crown Copyright and is reproduced with the permission of Land and Property Services under delegated authority from the Controller of Her Majesty's Stationary Office, © Crown copyright and database rights

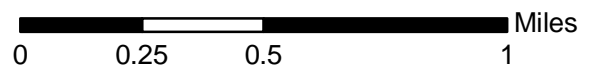
# Newry Canal Way - Section 7 Mullaghglass to Newry



1:25,000

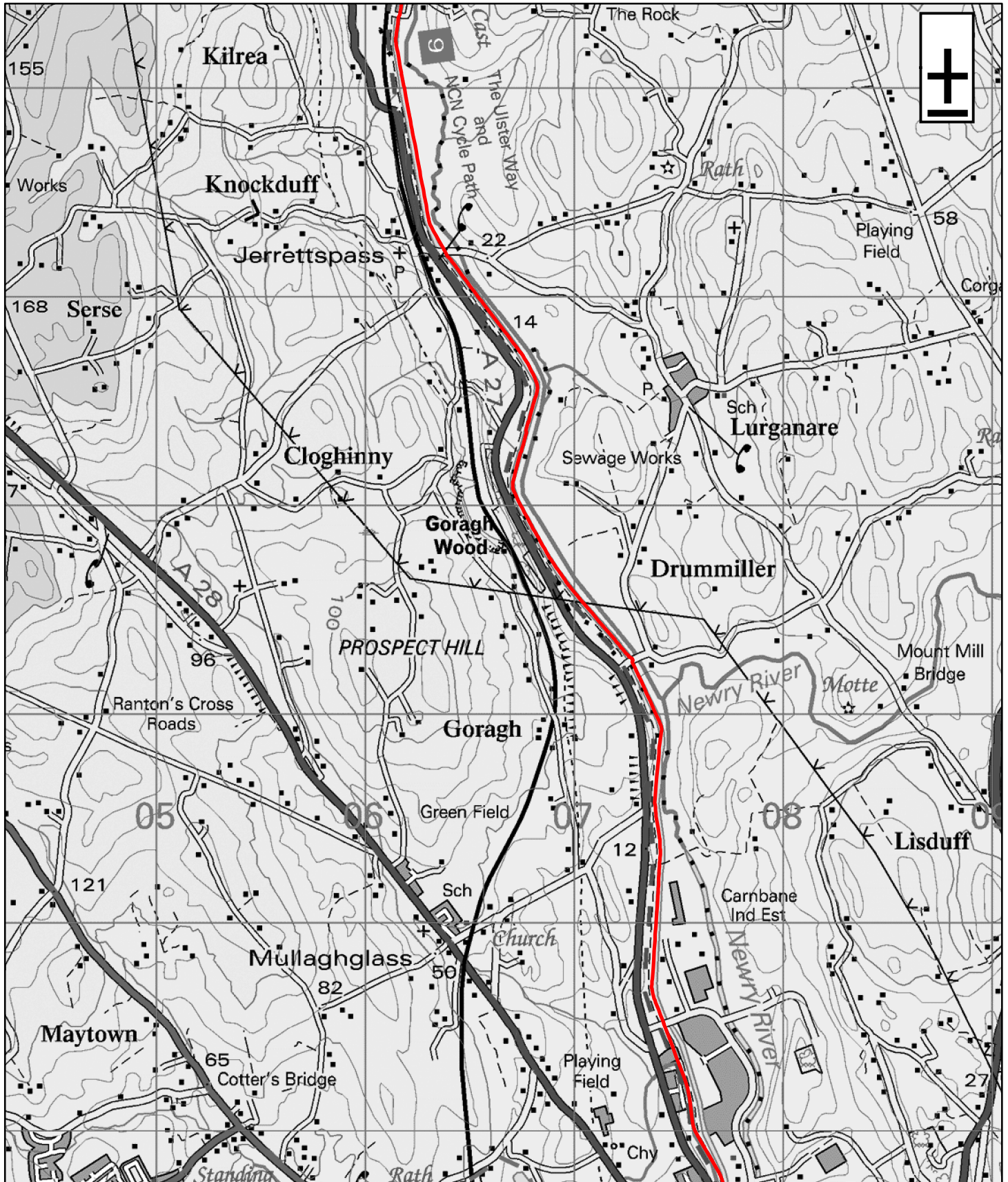


**WalkNI.com**  
Your definitive guide to walking  
in Northern Ireland



This material is Crown Copyright and is reproduced with the permission of Land and Property Services under delegated authority from the Controller of Her Majesty's Stationary Office, © Crown copyright and database rights

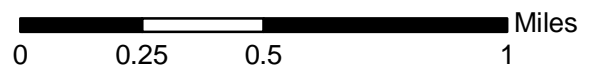
# Newry Canal Way - Section 5 and 6 Kilrea to Mullaghglass



1:25,000

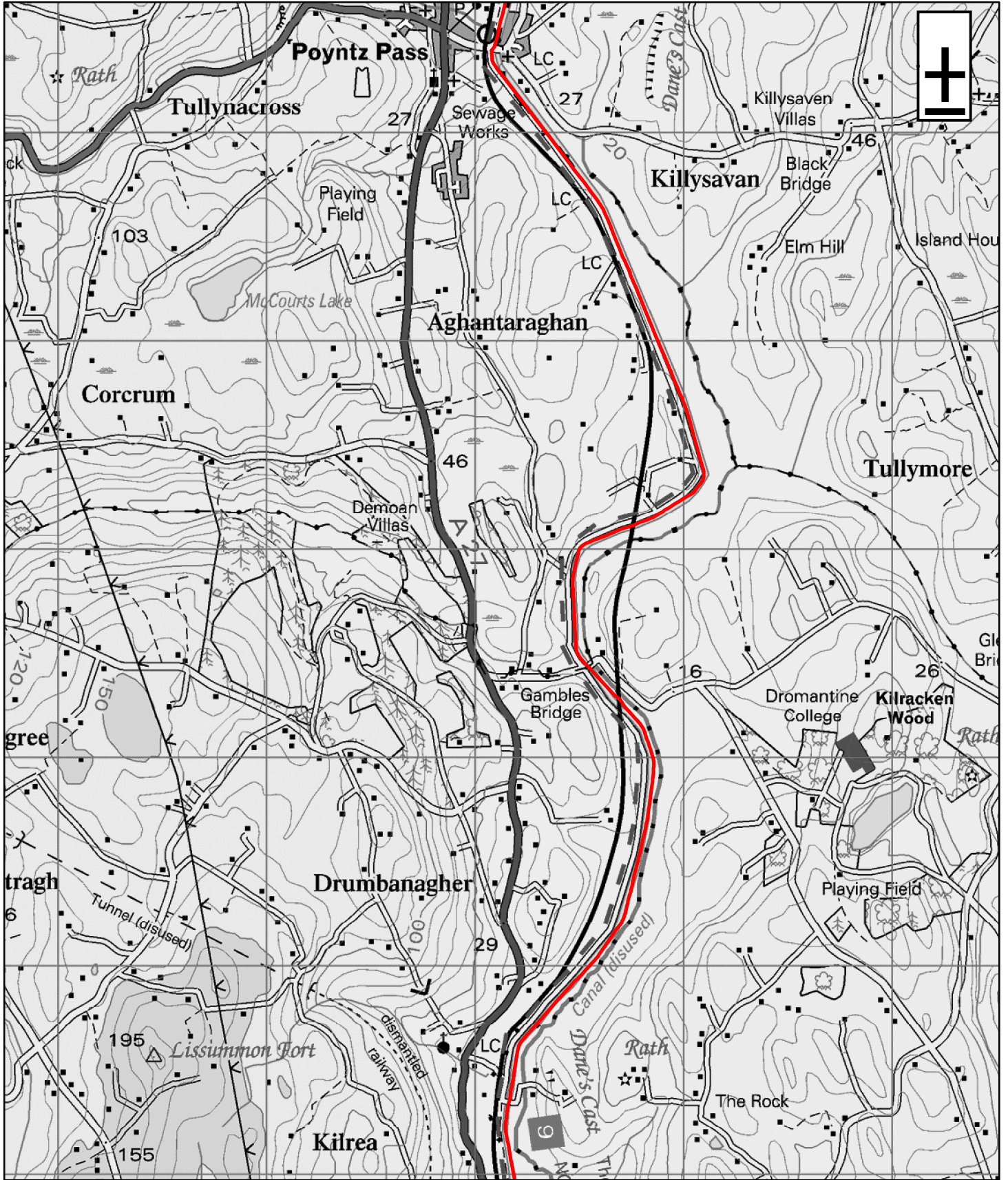


**WalkNI.com**  
Your definitive guide to walking  
in Northern Ireland



This material is Crown Copyright and is reproduced with the permission of Land and Property Services under delegated authority from the Controller of Her Majesty's Stationary Office, © Crown copyright and database rights

# Newry Canal Way - Section 4 Poyntz Pass to Kilrea



1:25,000

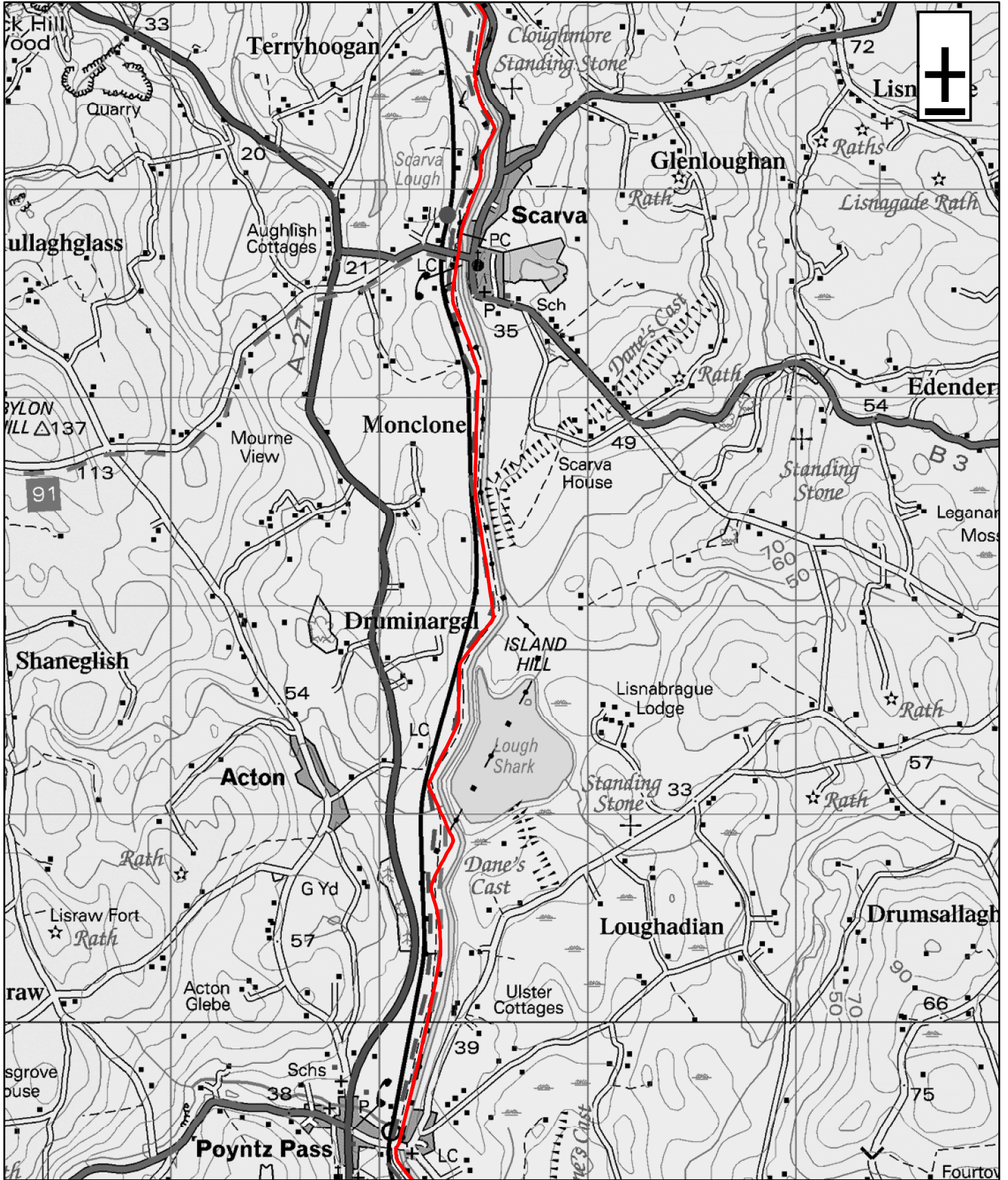


**WalkNI.com**  
Your definitive guide to walking  
in Northern Ireland

0 0.25 0.5 1 Miles

This material is Crown Copyright and is reproduced with the permission of Land and Property Services under delegated authority from the Controller of Her Majesty's Stationary Office, © Crown copyright and database rights

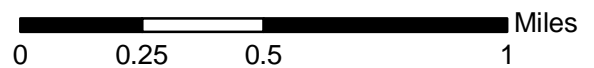
# Newry Canal Way - Section 3 Cloughmore Standing Stone to Poyntz Pass



1:25,000



**WalkNI.com**  
Your definitive guide to walking  
in Northern Ireland



This material is Crown Copyright and is reproduced with the permission of Land and Property Services under delegated authority from the Controller of Her Majesty's Stationary Office, © Crown copyright and database rights